

HT 262

200 Watt max

8 Ω

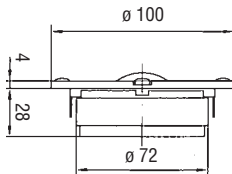
Ø 26 mm / 1"

4 Ω CAR CT262

TWEETER

Soft dome in seta

Doped silk soft dome



Potenza nominale **100 W**

Impedenza nominale **8 Ω**

Sensibilità (1W/1m) **90 dB**

Ø bobina mobile **26 mm**

Altezza traferro **3 mm**

Fori di fissaggio **4 \varnothing 5/ \varnothing 88**

Foro pannello **75 mm**

Re **6,5 Ω**

Fs **1 kHz**

Qms **3,5**

Qes **1,23**

Qts **0,9**

Mms **0,35 g**

Cms

D **32 mm**

Vas

BxI **3,4 Wb/m**

Xmax **0,1 mm**

η°

Le **0,07 mH**

Peso **0,63 Kg**

