

# HS 250

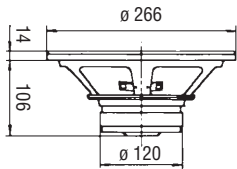
150+150 Watt max 8 Ω

Ø 250 mm / 10"

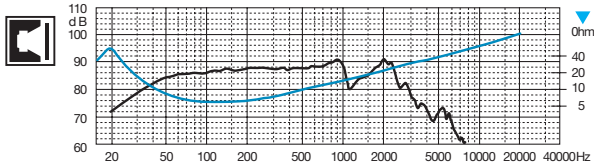
## SUB WOOFER

Doppia bobina mobile, membrana in cellulosa smorzata e sospensione in poliuretano

Dual coil, doped paper cone, polyurethane surround



Potenza nominale	<b>80+80 W</b>	Re	<b>6+6 Ω</b>	D	<b>208 mm</b>
Impedenza nominale	<b>8+8 Ω</b>	Fs	<b>19 Hz</b>	Vas	<b>194 dm<sup>3</sup></b>
Sensibilità (1W/1m)	<b>86 dB</b>	Qms	<b>3,57</b>	BxI	<b>8,74 Wb/m</b>
Ø bobina mobile	<b>38 mm</b>	Qes	<b>0,26</b>	Xmax	<b>8 mm</b>
Altezza traferro	<b>8 mm</b>	Qts	<b>0,24</b>	η°	<b>0,49 %</b>
Fori di fissaggio	<b>8 ∅<sup>5</sup> / ∅ 253</b>	Mms	<b>56 g</b>	Le	<b>0,4 mH</b>
Foro pannello	<b>235 mm</b>	Cms	<b>1,2 mm/N</b>	Peso	<b>2,85 Kg</b>



Parametri rilevati con bobine mobili in parallelo

Parameters taken with coils in parallel