

HM 600

250 Watt max

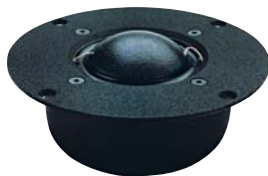
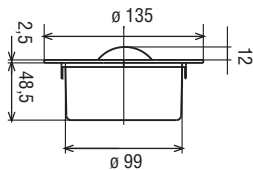
8 Ω

Ø 50 mm / 2"

MID RANGE

Membrana in tela smorzata,
magnete in Alnico V

Doped fabric soft dome
Alnico V magnet



Potenza nominale **100 W**

Impedenza nominale **8 Ω**

Sensibilità (1W/1m) **91,5 dB**

Ø bobina mobile **50 mm**

Altezza traferro **4 mm**

Fori di fissaggio **4 \varnothing 5 / \varnothing 123**

Foro pannello **103 mm**

Re **6,2 Ω**

Fs **390 Hz**

Qms **3,33**

Qes **0,39**

Qts **0,35**

Mms **2,2 g**

Cms **0,075mm/N**

D **51 mm**

Vas **0,04 dm³**

Bxl **9,2 Wb/m**

Xmax **0,25 mm**

η° **0,65%**

Le **0,2 mH**

Peso **1,54 Kg**

